

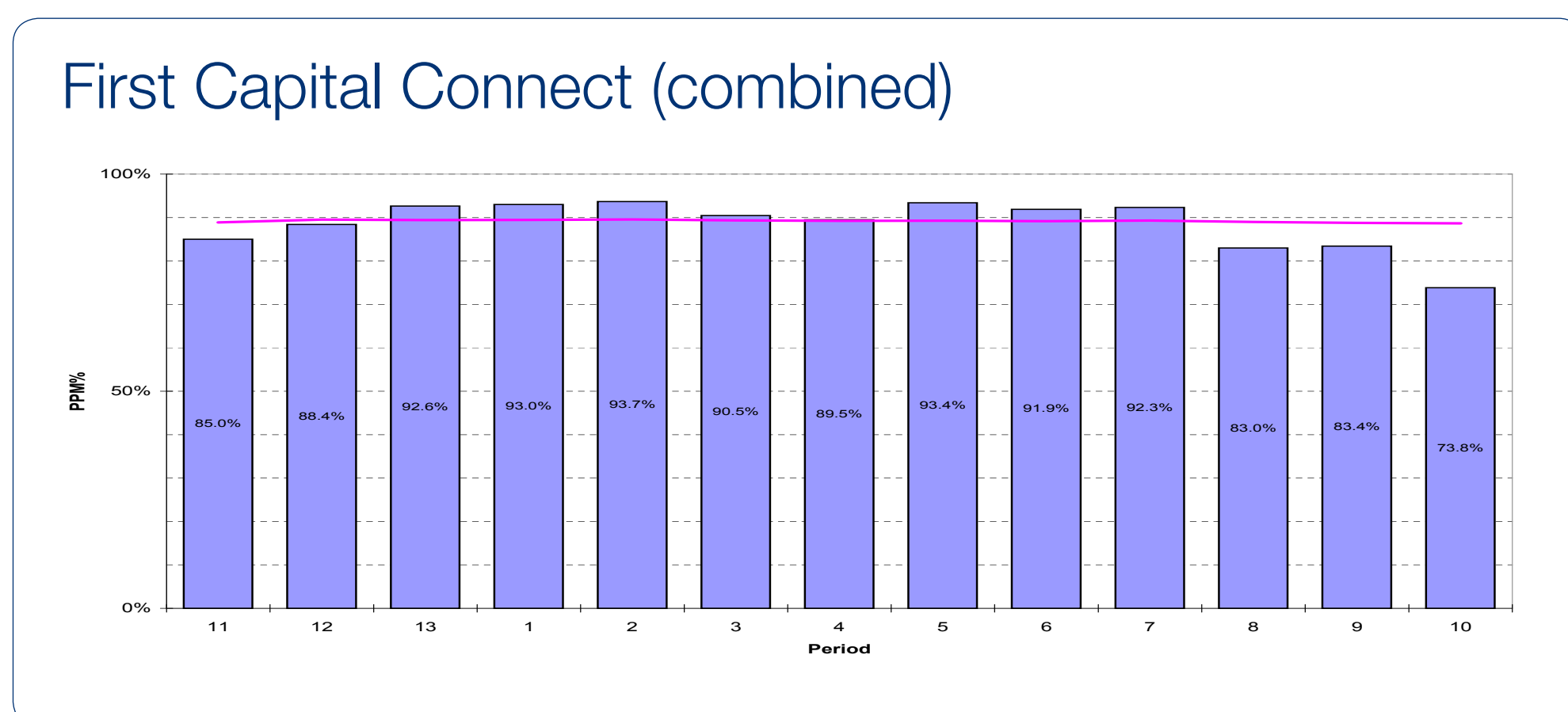
How are we doing?

Train running figures for First Capital Connect services over the period below

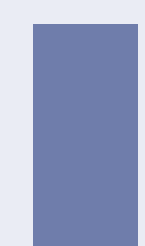
Period 10: 12 December 2010 to 8 January 2011

Public performance measure:

(% of planned train services that were less than 5 minutes late at final destination)



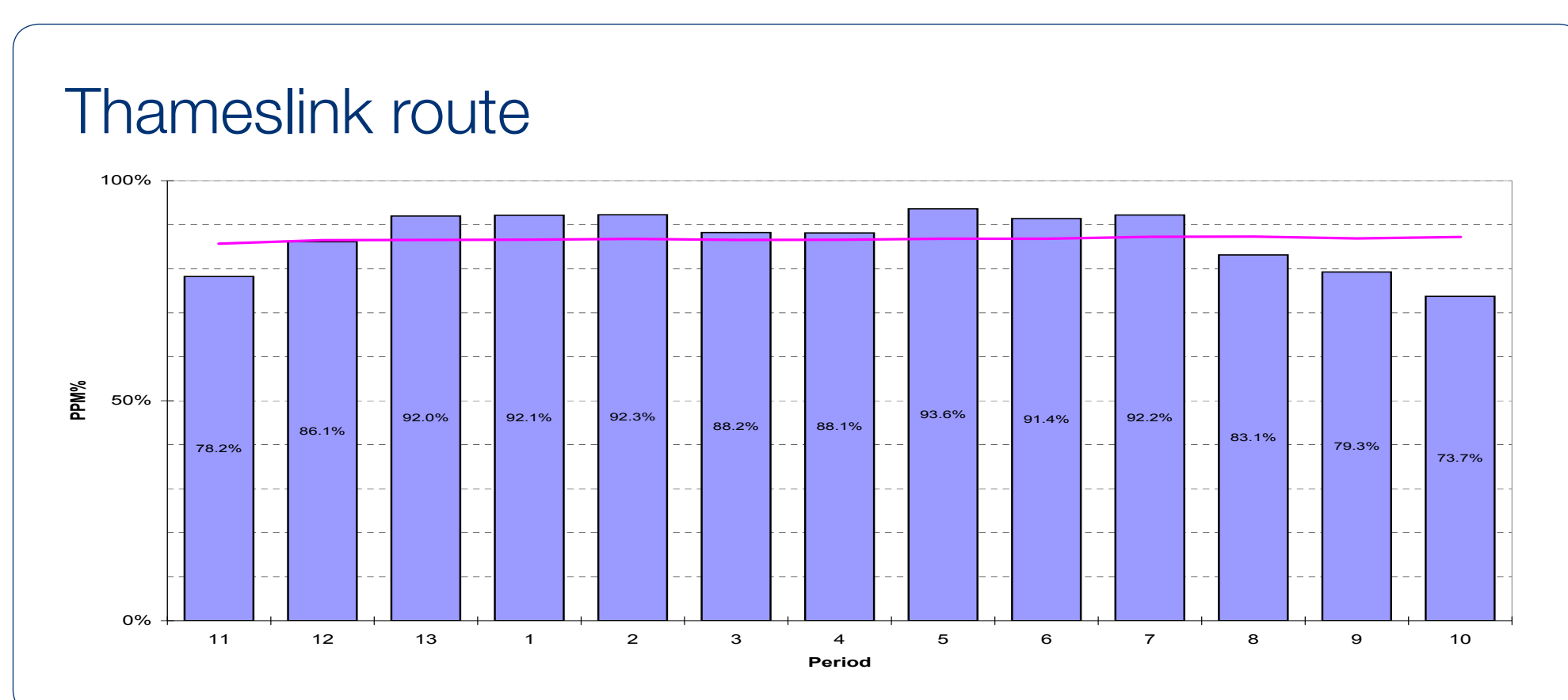
KEY:



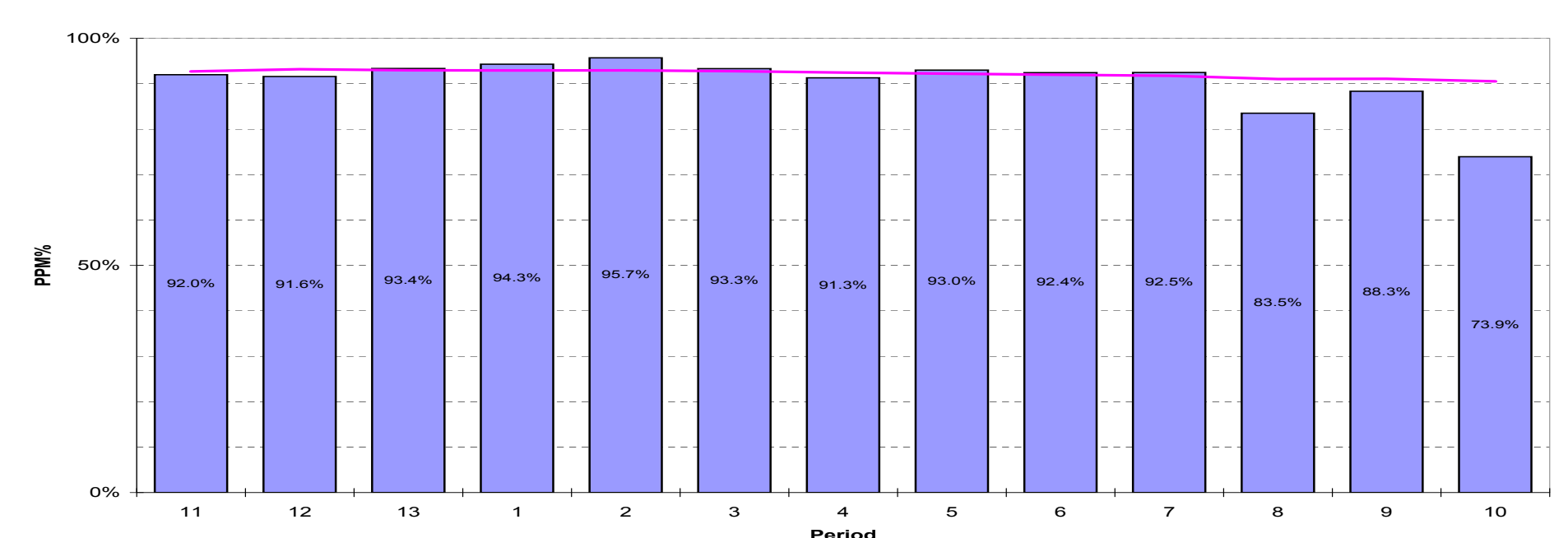
Public performance measure - % of planned train services less than 5 minutes late at their destination



Moving annual average public performance measure

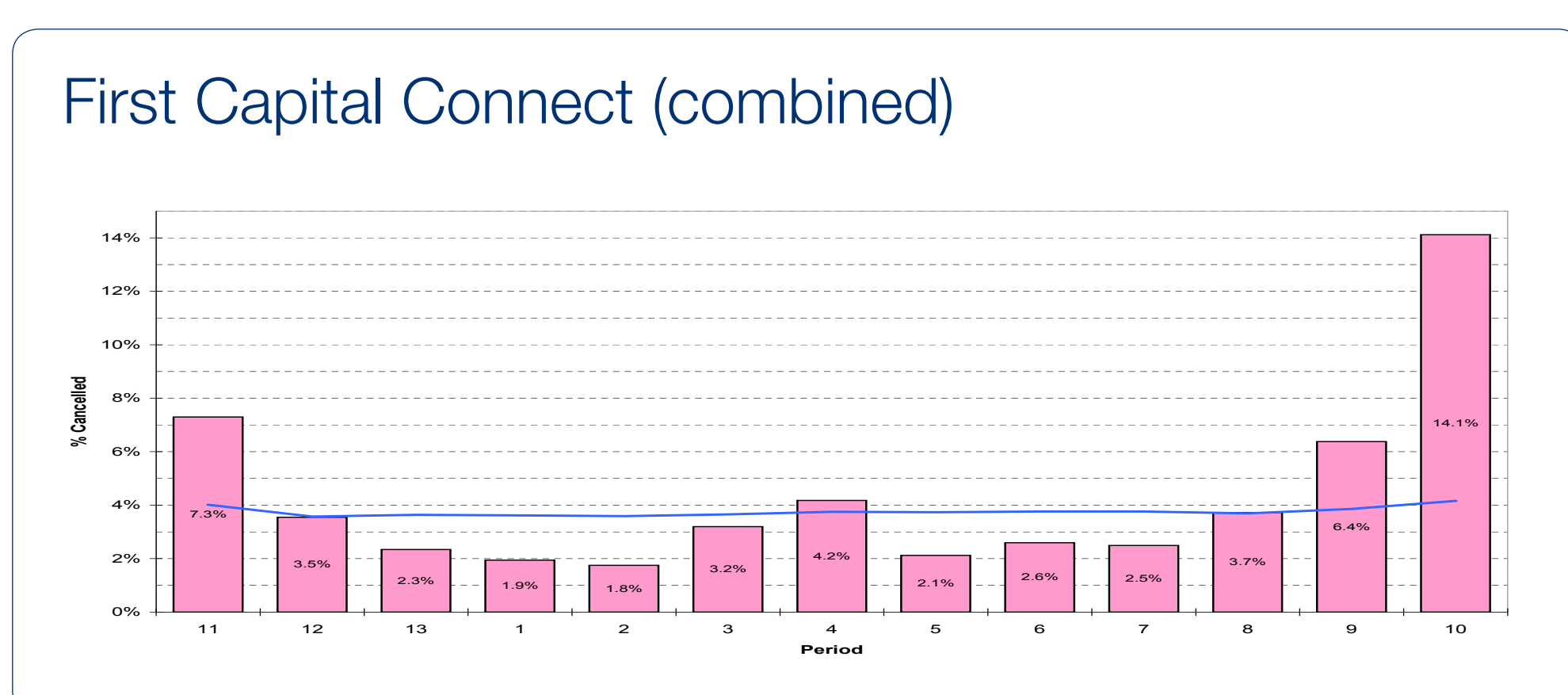


Great Northern route



Cancellations:

(% of planned train services that were cancelled for part or all of their journey)



KEY:



Cancellations - % of planned train services that were cancelled for part or all of their journey



Moving annual average cancellations figure

Major incidents that affected performance:

18 - 24 December 2010 Adverse weather conditions

21 December 2010

Overhead line damage near Huntingdon

19 December 2010 Overhead line damage near St Neots

7 January 2011

Person hit by a train at Mill Hill Broadway

Thameslink route performance figures for 21 to 24 December are calculated against the revised timetable which was in place.

If your journey on First Capital Connect was delayed by more than 30 minutes, you can claim for compensation through the Delay Repay scheme. To claim, pick up a Delay Repay leaflet or fill in the online form at www.firstcapitalconnect.co.uk/delayrepay

Financial Services Act 1986: while First Capital Connect considers that this data has been validated to a reasonable standard having regard to its intended use, no reliance should be placed upon it for the purpose of making any investment decision in relation to First Capital Connect or any other Train Operating Company.

CI Code: PER10010 Display until: 11/02/11